

HOW MUCH DO YOU REMEMBER FROM THE FIRST NOVEL IN THE SERIES? CHECK OUT YOUR KNOWLEDGE WITH THIS TRUE/FALSE QUIZ!

Amelia's two best friends are Amida and Araminta.

There's a mermaid community in New York.

At least one of Jet Mir's sisters isn't his sister.

Edith and Irene were friends once.

Mewa owns the antique bookshop.

Davika has older brother named Niran.

Leticia rules Bermuda Triangle.

The capital of Nerland is Dusterburg.

Jayden is the best karate student.

Lumina could light fire underwater.

The mermaid princess of Atlantis died.

Amelia saved Cristovao's life.

Jet Mir doesn't mind eating charcoal.

Greene trains tai chi.

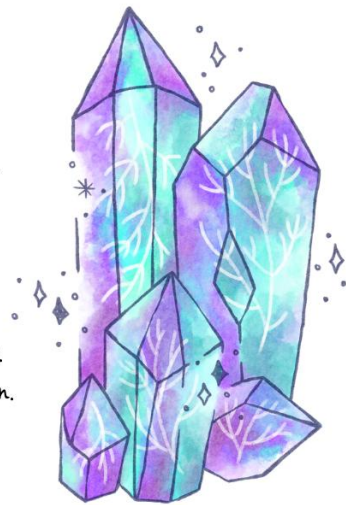
Saliffa is from the Red Sea.

Hansuke's missing girlfriend was Cassidy.

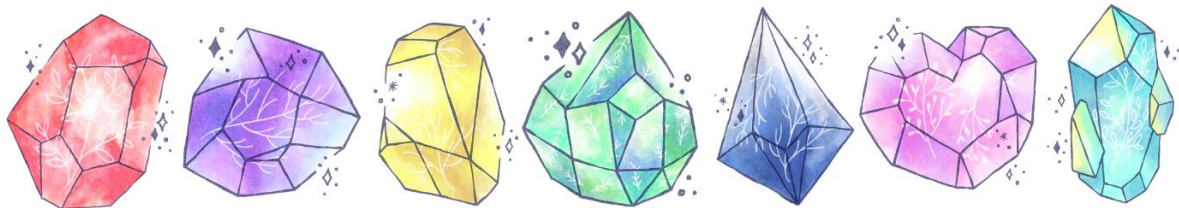
Amelia was chosen by General Esteban.

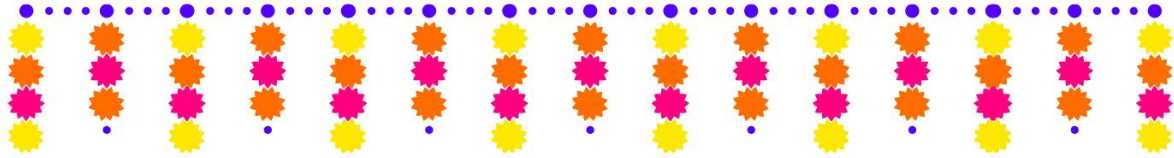
Mr. Vega is Lumina's father.

Antemidia consists of three rings.



FIND MORE PRINTABLES ON MERMAIDPRINCESSAMELIA.WORDPRESS.COM





CAN YOU DECIPHER THE UNIVERSAL LEGEND'S PAGE WITHOUT CAPTAIN JET MIR'S HELP?

A	B	C	D	E	F	G	H	I	J	K	L	M	N	O	P	Q	R	S	T	U	V	W	X	Y	Z



10 26 9 17 14 16 9 7 12 25 15 20 23 25 17

26 19 25 14 9 24 14 10

18 16 25 17 7 9 9 5 9 15 4 14 16 23 17 7

24 9 5 9 17 14 9 9 17

14 23 8 9 24 14 10 24 16 25 3 9

14 16 9 24 26 23 15 23 14 24 10 1

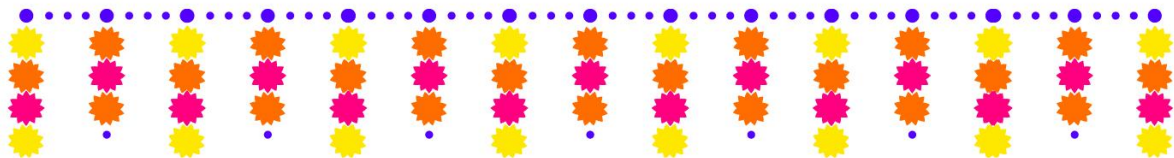
14 16 9 26 9 10 26 19 9 14 10

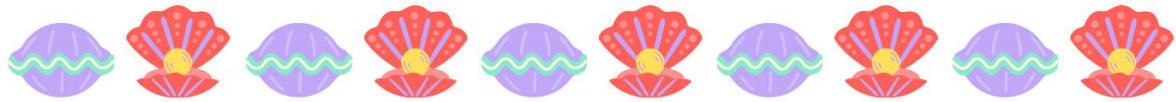
18 15 9 25 14 9 13 15 25 17 20

17 9 22 22 10 15 19 20 24



FIND MORE PRINTABLES ON MERMAIDPRINCESSAMELIA.WORDPRESS.COM





TAISUKE'S SUDOKU PUZZLES

5	1		7			9		8
			9			6	3	1
			4	1				
	9				4	3		
3						4		
	4							
							6	
2			8	4	6	1		3
6		5		7	1	8		

7	2				5			
4						5		
	1	8	6		3		4	
				6	2	1		
8	5			1				
		1						
		2						5
		4	5					
6			2			3	1	

			2
	4	1	
	2	3	

			4
4		1	2
		2	

1			
		3	1
			4





YOU FOUND POSEYDA'S PURSE... BUT THERE ARE A FEW ITEMS THAT DON'T BELONG TO HER. CAN YOU TELL WHICH ONES?



FIND MORE PRINTABLES ON MERMAIDPRINCESSAMELIA.WORDPRESS.COM

ANSWER: DAVIKA'S MP3 AND EDITH'S GLASSES

