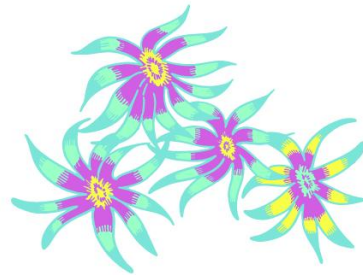
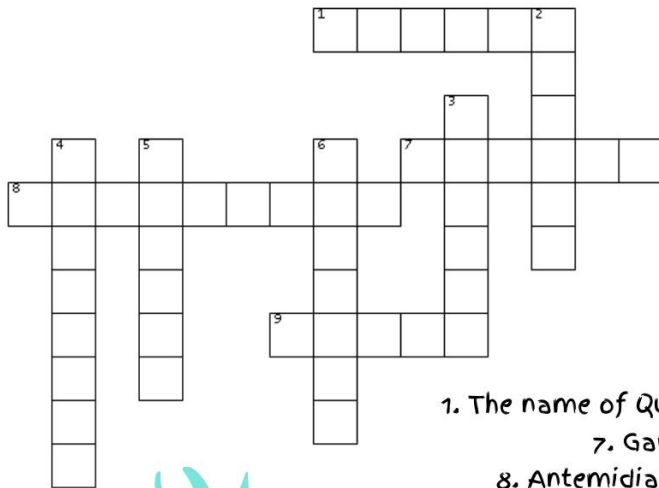




MERMAID PRINCESS AMELIA CROSSWORD: HOW WELL DO YOU KNOW THE SERIES?



ACROSS

1. The name of Queen Mond's older daughter
7. Garabel's artifact
8. Antemidia's most important god
9. Animal used for intercontinental transport

DOWN

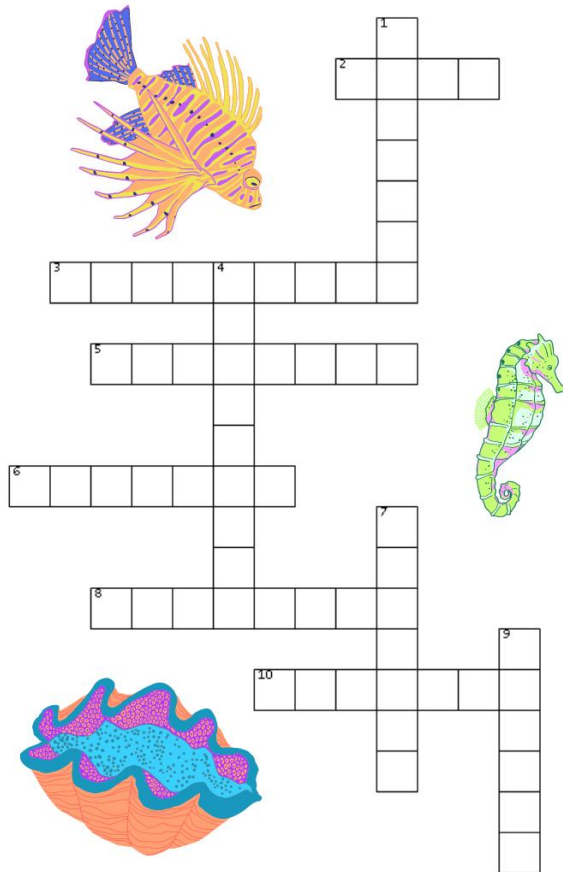
2. Tony's least favorite general
3. Mermaids from this country didn't hide their existence from humans
4. Edith's greatest passion
5. Amelia's favorite sport on land
6. Animal used for short-distance transport

FIND MORE PRINTABLES ON MERMAIDPRINCESSAMELIA.WORDPRESS.COM





MERMAID PRINCESS AMELIA CROSSWORD: HOW WELL DO YOU KNOW THE SERIES?



ACROSS

2. Sawa's younger sister
3. The home Jet Mir inherited from his grandfather
5. Santa Ana is in this country
6. The Uxmal Manor is actually a Mesoamerican ...
8. Aramina's real name
10. Taisuke's twin brother

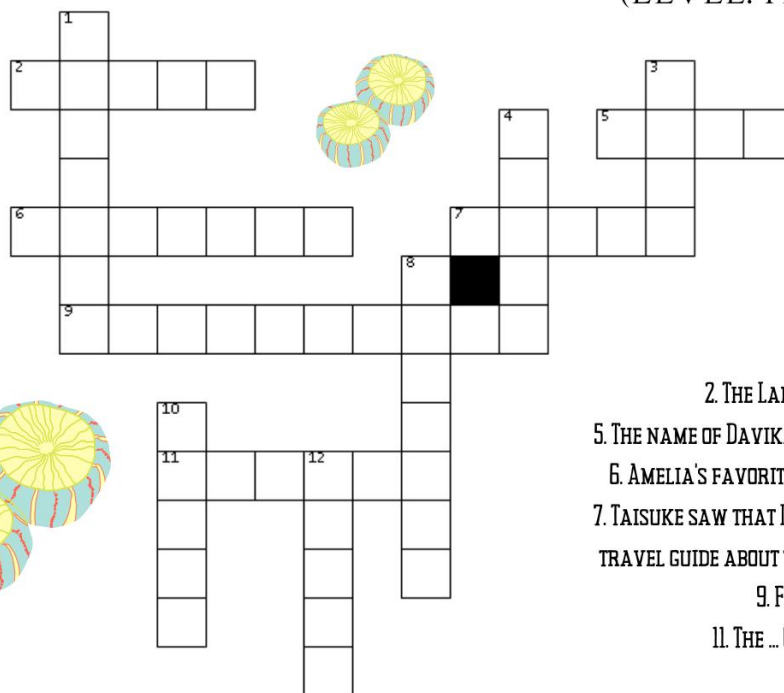
DOWN

1. Lumina's motif for stealing artifacts
4. Mermaid kingdom ruled by General Asvald Altamira
7. Edith's artifact and favorite fashion item
9. Kamadia lives in the Kingdom of One Thousand...





THIS AIN'T A CROSSWORD FOR SEA ANEMONES!
(LEVEL: HARD)



ACROSS

- 2. THE LAND OF BARITE ...
- 5. THE NAME OF DAVIKA'S BOYFRIEND
- 6. AMELIA'S FAVORITE BOARD GAME
- 7. TAISUKE SAW THAT LUMINA HAD A TRAVEL GUIDE ABOUT THAT COUNTRY
- 9. FIERY AND LOST
- 11. THE ... OCEAN'S ARMY

DOWN

- 1. JET MIR'S GIFT FOR AMELIA
- 3. ACRONYM OF THE TEMPORARY UNION OF THE NERLANDESE IN THE ATLANTIC
- 4. ANTEMIDIA HAS THREE OF THEM
- 8. THE NAME OF ANTEMIDIA'S FIRST PRINCESS
- 10. THE LOTUS STATE IS IN THE NILE RIVER, WHICH IS IN THIS COUNTRY
- 12. THE HOSPITABLE SEA IS COMMONLY CALLED THE ... SEA

